



I-10 BROADWAY CURVE IMPROVEMENT PROJECT NEWS from the CURVE

#StayAheadOfTheCurve and download the free mobile app, **The Curve!**



July 2024 Monthly Newsletter

Collector-Distributor Road Scheduled to Open in August

The time is almost here to “find your lane.” If you use westbound Interstate 10 to access destinations on US 60, Broadway Road, State Route 143 or 40th Street, your route may change when the westbound Collector-Distributor (CD) road opens in August. To access US 60, Broadway Road, State Route 143, Phoenix Sky Harbor International Airport and 40th Street, drivers must exit westbound I-10 south of Baseline Road onto the westbound CD road. There will also be a dedicated lane from westbound US 60 to access the westbound CD road. To learn how the CD roads work and how to access common destinations using them, visit <https://i10broadwaycurve.com/findyourlane/>.



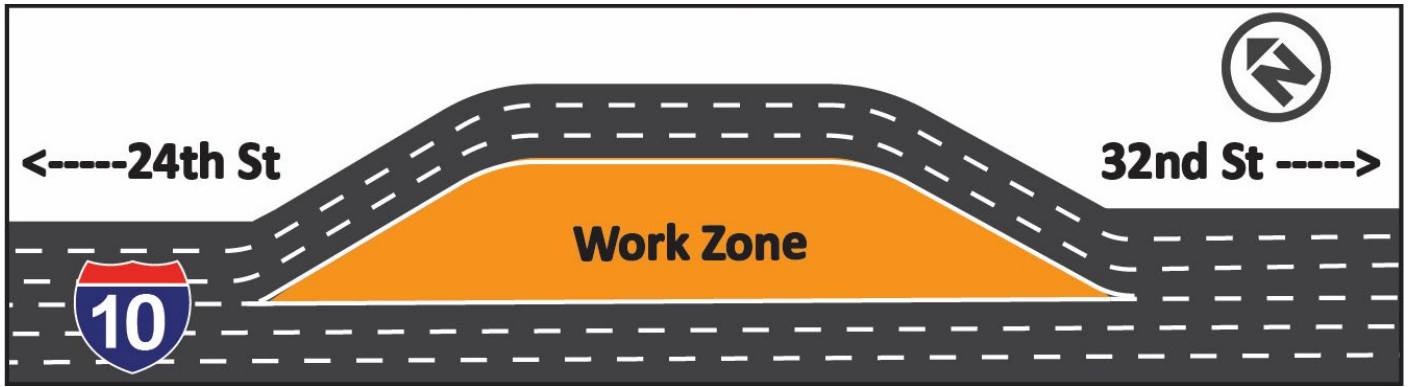
The westbound CD road, shown here, will reduce the need for vehicles to weave between lanes and will help keep traffic flowing on I-10.

Bridges Update

Salt River Bridge

Later this month, crews are scheduled to create a split lane configuration on westbound I-10, which will remain in place through the summer. This configuration is similar to the split lane configuration that is in place on westbound I-10 between Broadway Road and 40th Street. The new configuration will not affect access to any I-10 exits except for the westbound I-10 on-ramp at 32nd Street, which is scheduled to close on Friday, July 19, and is expected to remain closed into September.

Workers finished part of the bridge deck for the new eastbound I-10 lanes, so they will create a similar split lane configuration in the eastbound direction later this summer.



Once the split lane configuration is in place, westbound I-10 drivers wanting to exit onto I-17 are encouraged to move into the right three lanes before 32nd Street.

SR 143/I-10 bridges

Workers continue constructing the bridge decks. They expect to open the bridge connecting southbound SR 143 to eastbound I-10 in late summer or early fall and the high-occupancy vehicle (HOV) ramp connecting SR 143 and I-10 in late 2024.



Crews recently placed the bridge deck of the ramp that will connect southbound SR 143 with eastbound I-10. The ramp is expected to open to traffic in late summer/early fall of this year.

Plan Ahead: Long-Term Closures and Restrictions

Currently, the project has a number of long-term closures and restrictions in place, including:

- 52nd Street is closed in both directions between 14th Street and Broadway Road until late July for a traffic shift.
- Guadalupe Road, including the bridge over I-10, is closed in both directions between Pointe Parkway and Calle Sahuaro until late July for utility work.
- The westbound US 60 HOV ramp to westbound I-10 closed on Friday, July 12, for bridge joint maintenance work. The ramp is scheduled to reopen on Monday, July 22.



Crews also have the following long-term closures planned:

- The eastbound I-10 HOV ramp to eastbound US 60 is scheduled to close on Friday, July 19, for bridge joint maintenance work. The ramp is scheduled to reopen on Monday, July 29.
- The westbound I-10 off-ramp at Broadway Road is scheduled to close on Friday, July 19, for ramp reconstruction. It is scheduled to reopen in late August.
- The westbound I-10 on-ramp at 32nd Street is scheduled to close on Friday, July 19, for ramp reconfiguration and will remain closed into September.

To #StayAheadOfTheCurve, visit the project [website](#) or download the free mobile app, [The Curve](#), before you travel.

In the photo above, workers perform grading along 52nd Street north of Broadway Road as part of a traffic shift.

Your Questions Answered

Question: Where does the bridge go that crews are building over the eastbound I-10 off-ramp at Baseline Road?

Answer: That bridge is part of the eastbound CD road. The CD road separates drivers entering the freeway between 48th Street and Baseline Road from the eastbound I-10 mainline traffic. Drivers entering eastbound I-10 at Broadway Road will travel on the eastbound CD road until the US 60 interchange. At this point, drivers will be given the option to exit to eastbound US 60, Baseline Road or join the eastbound I-10 mainline. For more details on CD roads visit <https://i10broadwaycurve.com/findyourlane/>



The bridge over the eastbound I-10 off-ramp at Baseline Road, shown here, is part of the eastbound CD road.

How are we doing? Let us know by participating in our Construction Operations Survey for the I-10 Broadway Curve Improvement Project.

Please take a couple of minutes to let us know how we did between Jan. 1, and June 30, 2024, by completing this [survey](#). Your responses will help us determine how we can improve construction activities and communication efforts moving forward.

We appreciate your response by 4 p.m. on Friday, July 26, 2024.

<https://www.surveymonkey.com/r/Electronic24Q1Q2>

This is an anonymous survey and your participation is completely voluntary.

#StayAheadOfTheCurve

Construction is scheduled to continue through late 2024. Throughout this project, our goal is to minimize impacts as much as possible and provide timely, accurate information so you can plan ahead and get to where you need to be. Learn more about the project and engage with the project team in any of these ways:

- **Bilingual Project Information Line:** 602.501.5505
- **Project Website:** i10BroadwayCurve.com
- **Visit or Write:** 3157 E. Elwood St., Suite 100, Phoenix, 85034. The Community Office is open from 8 a.m. to 5 p.m., Monday through Friday, except holidays.
- **Email:** Info@i10BroadwayCurve.com
- **App:** Join more than 13,000 others who want to stay ahead of the curve by downloading our free mobile app, The Curve. You'll find it on the [App Store](#) or [Google Play](#).