

I-10 BROADWAY CURVE IMPROVEMENT PROJECT

NEWS from the CURVE

Volume 4 | Issue 3

July 2024

IN THIS ISSUE

- Westbound Collector-Distributor Road Opens Soon
- Bridge Update
- Schedule
- Long-Term Closures
- Project Overview
- Rideshare Programs
- Stay Ahead of the Curve



Welcome to the Curve

Construction continues along the Interstate 10 Broadway Curve Improvement Project

The I-10 Broadway Curve Improvement Project runs along 11 miles of I-10 between the Loop 202 (Santan/South Mountain Freeway) and I-17 near Phoenix Sky Harbor International Airport. Additional work is occurring on approximately one mile of east- and westbound US 60 between I-10 and Hardy Drive and on approximately one mile of north- and southbound State Route 143 between I-10 and the southern end of the SR 143 bridge over the Salt River.



The CD roads, highlighted in red, collect traffic from the I-10 mainline, SR 143 and US 60 and distribute it to crossroads or other highways.

Westbound Collector-Distributor Road Opens Soon

The westbound Collector-Distributor (CD) road is scheduled to open in late summer. Drivers will need to exit westbound I-10 south of Baseline Road onto the westbound CD road to access US 60, Broadway Road, State Route 143, Sky Harbor International Airport and 40th Street. There will also be a dedicated lane from westbound US 60 to access the westbound CD road. These changes will reduce the need for vehicles to weave between lanes and help keep traffic flowing on I-10. To learn how the CD roads work and how to access common destinations using them, visit <https://i10broadwaycurve.com/findyourlane/>.



Arizona Department of Transportation

[i10BroadwayCurve.com](https://i10broadwaycurve.com)



Bridge Update

The I-10 Broadway Curve Improvement Project includes widening I-10 in both directions over the Salt River. In April, crews placed the bridge deck of the new westbound lanes, which is the part of a bridge vehicles drive on. In July, crews placed the bridge deck of the new eastbound lanes. Next, crews will create split lane configurations between 24th and 32nd streets. They will establish the westbound split later this summer and the eastbound split in late summer or early fall.

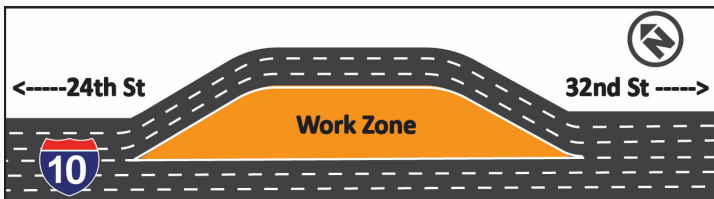
In late May, crews finished setting concrete girders over lanes of I-10 to connect the ramps that will link the highway to SR 143. Workers are now constructing the bridge decks. Crews expect to open the bridge connecting southbound SR 143 to eastbound I-10 in late summer/early fall and the high-occupancy vehicle (HOV) ramp connecting SR 143 and I-10 in late 2024.



Workers place the concrete for the widening of the westbound lanes of I-10 over the Salt River.



A crane sets a concrete girder for the high-occupancy vehicle (HOV) ramp that will connect I-10 with State Route 143.



The westbound I-10 split lane configuration will create a safe work zone for crews to work.

2021-2024 DESIGN AND CONSTRUCTION SCHEDULE*			
PHASE 1	PHASE 2	PHASE 3	PHASE 4
Spring 2021 – Mid-2022	Mid-2022 – Late 2023	Late 2023 – Summer 2024 / Early Fall 2024	Late Summer / Early Fall 2024 – Early 2025
<ul style="list-style-type: none"> Remove pavement. Establish work zones. Coordinate utility relocations. Make roadway improvements including new barrier, drainage and signs. Begin construction of the bridges at 8th Street and Broadway Road. Install new lighting. 	<ul style="list-style-type: none"> Coordinate utility relocations. Make roadway improvements including new barrier, drainage and signs. Reconfigure ramps. Construct new walls. Begin CD road construction. Construct new roadway and bridges. Construct new bridges, including the US 60 and SR 143 to I-10 bridges. Complete construction of bridges at 48th Street and at Broadway Road. 	<ul style="list-style-type: none"> Complete utility relocations. Complete CD roads. Complete ramp configurations. Build SR 143 to I-10 direct connections. Complete bridge construction, including US 60 to I-10 bridges. Complete roadway improvements including new barrier, drainage and signs. Complete roadway and bridge widening. Complete retaining and sound walls. 	<ul style="list-style-type: none"> Finalize lighting. Finalize signage. Install landscaping. Install final roadway surface. Add striping. Complete project.

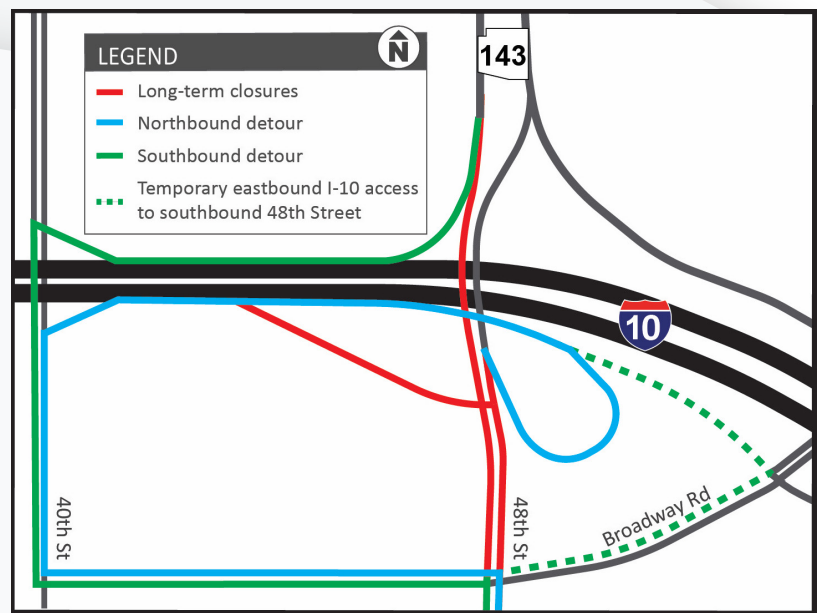
*schedule is subject to change

48th Street Long-Term Changes

The eastbound I-10 ramp to northbound SR 143 is scheduled to open later this summer. When the new ramp opens, the eastbound I-10 off-ramp at 48th Street will close for ramp reconfiguration. This closure is expected to last into late 2024, so drivers should use the new eastbound I-10 off-ramp at Broadway Road to access 48th Street instead.

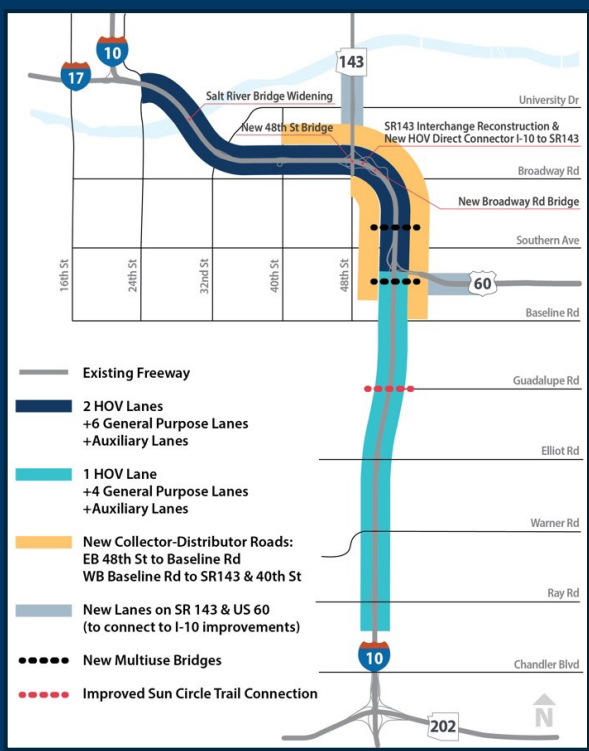
In order to reconstruct 48th Street between Broadway Road and I-10, workers plan to close 48th Street in both directions later this summer.

To #StayAheadOfTheCurve, visit the project [website](#) or download the free mobile app, [The Curve](#), before you travel.



Northbound 48th Street will be closed for approximately 45 days and southbound 48th Street will be closed for approximately 30 days.

PROJECT OVERVIEW



- Widening I-10 to six general purpose lanes and two high-occupancy vehicle (HOV) lanes in each direction between US 60 and I-17.
- Adding a fourth general purpose lane in each direction between Ray Road and US 60.
- Adding Collector-Distributor (CD) roads parallel to I-10 between Baseline Road and 40th Street to separate through-traffic on I-10 from local traffic entering or exiting the highway.
- Rebuilding the I-10 interchange with SR 143 to improve traffic flow and create direct connections to and from SR 143 for drivers in the I-10 HOV lanes.
- Replacing the Broadway Road bridge and 48th Street bridges over I-10.
- Widening the I-10 bridges over the Salt River.
- Building two bridges for pedestrians and bicyclists over I-10 between Baseline and Broadway roads.
- Improving the Sun Circle Trail Connection at Guadalupe Road.
- Building sound and retaining walls where warranted.



I-10 BROADWAY CURVE IMPROVEMENT PROJECT

Rideshare and Travel-Reduction Programs



Never taken transit before? Now's the time to start! If you're worried about driving through Broadway Curve construction, get a ride with Valley Metro's bus or light rail system. Taking transit saves you gas money, and getting out of traffic will reduce your stress and speed up your commute. It's also easier than ever thanks to the new Valley Metro App, which plans trips for you and displays the location of your bus or train in real time. Learn more and download the app at valleymetro.org/app.

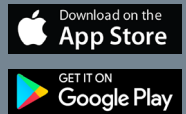
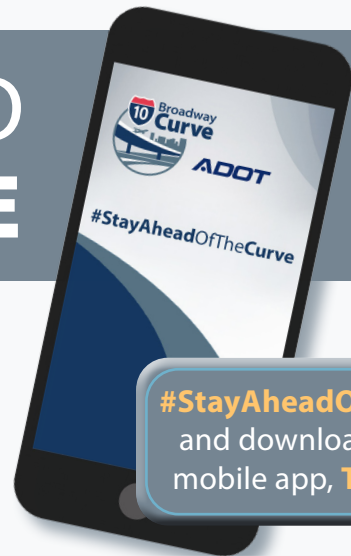


Valley Metro Commute Solutions works with Valley employers to implement and promote Travel-Reduction Programs that take more vehicles off the roads. When people vanpool, carpool, walk, bike, telework or work compressed workweek schedules, they reduce traffic congestion and improve air quality. To find a carpool partner visit ShareTheRide.com, Valley Metro's free and secure online ride matching service. Employers looking to reduce the impact their operations have on Valley roadways can call **Valley Metro's Travel Reduction Program** at **602.262.7433**.

Ridesharing and travel-reduction programs will help you *stay ahead of the curve!*

Sign up to receive traffic alerts and updates: i10BroadwayCurve.com

STAY AHEAD OF THE CURVE



#StayAheadOfTheCurve and download the free mobile app, **The Curve!**

Need a computer or internet so you can **#StayAheadOfTheCurve?**

Cox Connect2Compete program offers low-cost options for those who qualify. Call 855.222.3252 or go to rb.gy/hdqh5.



VISIT OR WRITE:

3157 E. Elwood St., Suite 100, Phoenix, AZ 85034
The Community Office is open during regular business hours, 8 a.m. to 5 p.m., Monday – Friday (except for holidays).



BILINGUAL PROJECT INFORMATION LINE: 602.501.5505



EMAIL: Info@i10BroadwayCurve.com



ONLINE: i10BroadwayCurve.com



i10BroadwayCurve.com



Arizona Department of Transportation

ADOT Project No. 010 MA 149 F007201C
Federal Aid No. 010-C(220)T