



I-10 BROADWAY CURVE IMPROVEMENT PROJECT NEWS from the CURVE

#StayAheadOfTheCurve and download the free mobile app, **The Curve!**

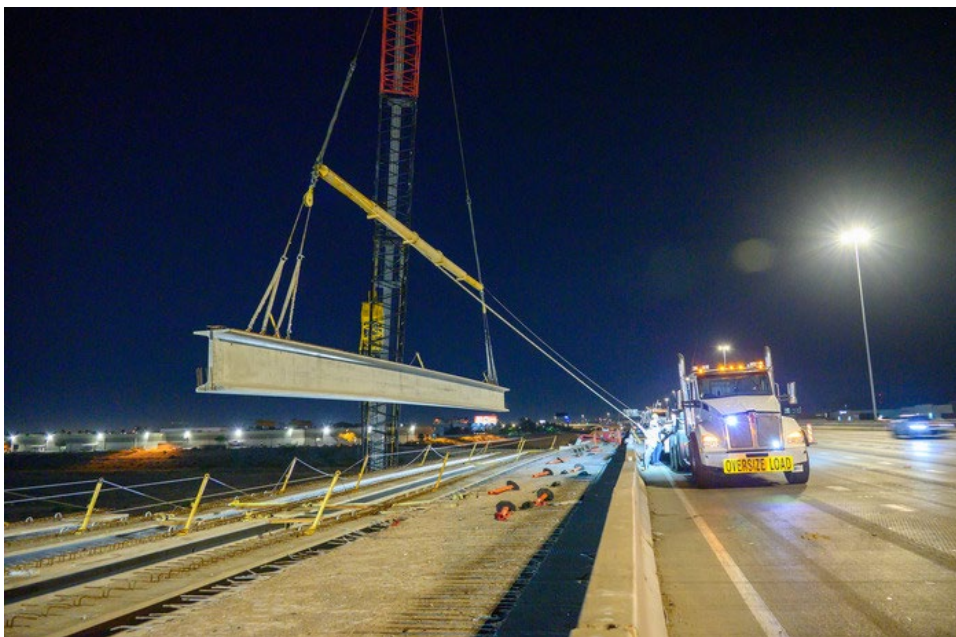


[+ SHARE](#)

February 2024 Monthly Newsletter

Salt River Bridge Update

The Interstate 10 Broadway Curve Improvement Project includes widening I-10 in both directions over the Salt River. In January, crews set 56 girders for the newly widened portions of I-10 over the Salt River. Each girder is approximately 130 feet long and weighs about 145,000 pounds. Next, crews will begin placing the bridge deck, which is the part of the bridge over which vehicles drive.



A crane lifts a girder from westbound I-10 at the Salt River and slowly moves it into position on the new bridge caps.



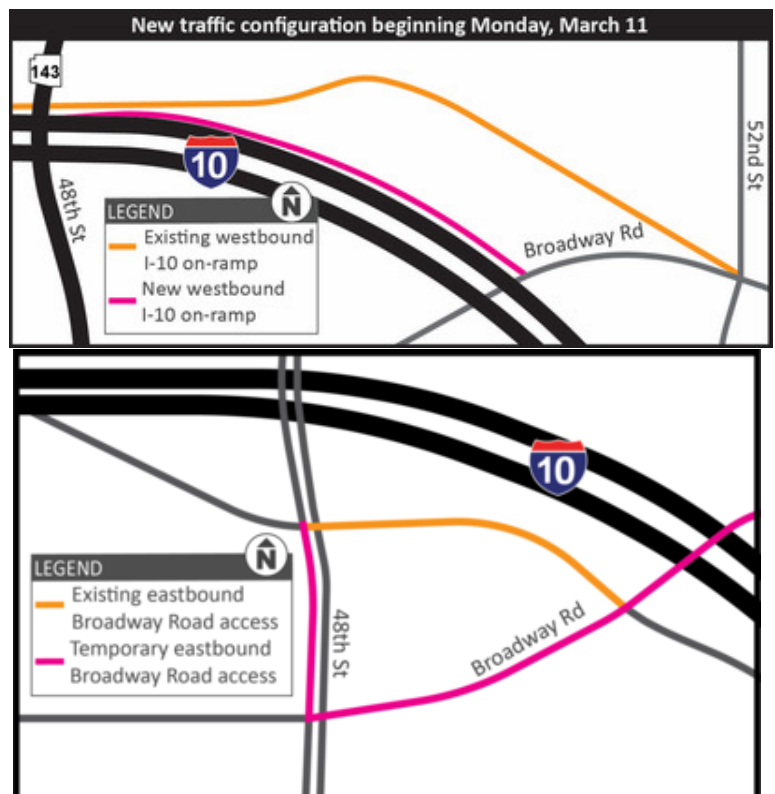
Once the girder is set, crews then make sure it is stable and secure before disconnecting it from the crane.

Ramp Changes at Broadway Road

There are two important changes coming to Broadway Road in March.

First, the new westbound I-10 on-ramp at Broadway Road will open in March. The new on-ramp entrance will be located west of the current entrance and will enter the I-10 near the median instead of from the shoulder.

Second, the eastbound I-10 connector ramp between 48th Street and Broadway Road will close permanently in March so that crews can begin building the new eastbound I-10 ramp to northbound SR 143. Drivers will use southbound 48th Street to access Broadway Road instead. Both of these traffic shifts will require roadway closures in the area, so to #StayAheadOfTheCurve, visit the project [website](#) or download the free mobile app, [The Curve](#), to stay up to date on all restrictions and closures.



Tempe Drain

The Tempe Drain runs through south Tempe, north of I-10, and empties into the Salt River between 24th and 32nd streets. It collects storm water from much of south Tempe and parts of I-10. The Broadway Curve Constructors are improving the drain, but to do so, they constructed temporary piping to direct the water around the construction zone in December. Crews plan to complete the work in February, weather permitting. Click [here](#) to view our Behind the Scenes video and learn more about the Tempe Drain.



Crews are replacing the lining of the Tempe Drain along westbound I-10 between 32nd and the Salt River with a concrete liner to reduce future maintenance needs.

Your Questions Answered

Question: Why did you close one lane of the westbound I-10 on-ramp at Baseline Road?

Answer: In October, crews closed one lane of the westbound I-10 on-ramp at Baseline Road so they can continue to build the new westbound Collector-Distributor (CD) road. While we understand the closure is inconvenient at times, the improvements in this area, including widening the ramp that connects westbound I-10 to eastbound US 60, will greatly benefit drivers once complete. When the CD road opens in late spring, it will improve safety and traffic flow by collecting traffic from the I-10 mainline and distributing it to crossroads or other highways. CD roads are similar to frontage roads, but without driveways or cross-street intersections. Once open, they will separate through-traffic on I-10 from local traffic entering and exiting the highway. The westbound CD road is being constructed along westbound I-10 from Baseline Road to 40th Street (generally three lanes). There will also be an eastbound CD road along eastbound I-10 from 48th

Street to Baseline Road (generally two lanes). To view a video animation of the completed project, visit <https://i10broadwaycurve.com/videos/>.

You can find answers to other frequently asked questions at <https://i10broadwaycurve.com/faq/>.



Last fall, crews closed one lane of the westbound I-10 on-ramp at Baseline Road so they can continue to build the new westbound CD road.

#StayAheadOfTheCurve

Construction is scheduled to continue through late 2024. Throughout this project, our goal is to minimize impacts as much as possible and provide timely, accurate information so you can plan ahead and get to where you need to be. Learn more about the project and engage with the project team in any of these ways:

- **Bilingual Project Information Line:** 602.501.5505
- **Project Website:** [i10BroadwayCurve.com](https://i10broadwaycurve.com)
- **Visit or Write:** 3157 E. Elwood St., Suite 100, Phoenix, 85034. The Community Office is open from 8 a.m. to 5 p.m., Monday through Friday, except holidays.
- **Email:** Info@i10BroadwayCurve.com
- **App:** Join more than 13,000 others who want to stay ahead of the curve by downloading our free mobile app, The Curve. You'll find it on the [App Store](#) or [Google Play](#).