



I-10 BROADWAY CURVE IMPROVEMENT PROJECT NEWS from the CURVE

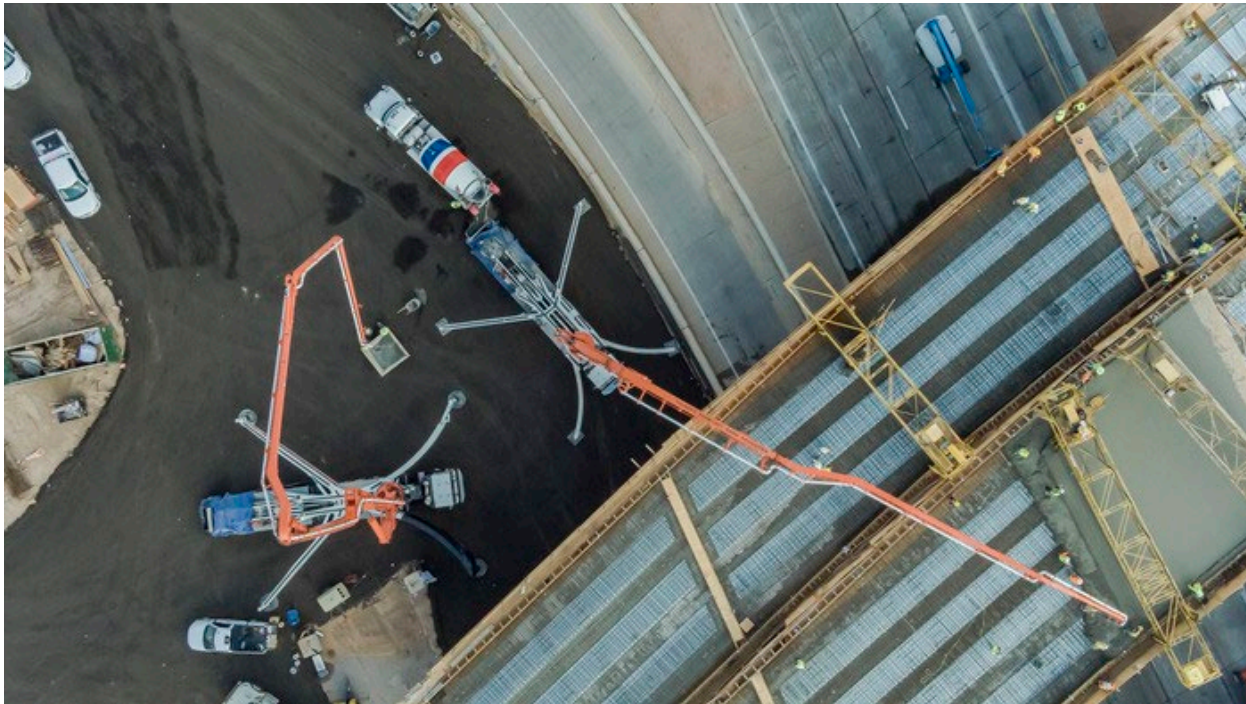
#StayAheadOfTheCurve and download the free mobile app, **The Curve!**



September 2023

[+ SHARE](#)

Work Zone Safety Reminder: Heroes in the Interstate 10 Broadway Curve Improvement Project





A recent incident in the Interstate 10 Broadway Curve Improvement Project area is serving as an important reminder to drive the posted speed limit throughout the work zone.

On Friday, Aug. 11, a truck hauling digging equipment was traveling on the ramp from westbound US 60 to westbound I-10 when another vehicle cut off the truck.

This caused the truck to jackknife and send it over the roadway barrier into the I-10 Broadway Curve Improvement Project work zone. I-10 Broadway Curve construction workers sprang into action and successfully removed the driver and the passenger from the

overturned truck. The driver and the passenger were both okay and none of the construction workers were injured. It's important to remember to drive the posted speed limit of 55 mph through the work zone. Also, pay attention to changing traffic patterns and roadway surface conditions, and adjust travel speeds accordingly so that everyone can get home safely.

Long-term I-10 ramp closures at 32nd and 40th streets continue

The long-term ramp closures along eastbound I-10 at 32nd and 40th streets are expected to reopen later in September. On July 29, workers closed the eastbound I-10 on-ramp at 32nd Street, and on Aug. 12, they closed the eastbound I-10 off-ramp at 40th Street. Both ramps are being reconfigured to accommodate the widened freeway. In relation to this work, plan for the following closures:



- Northbound 32nd Street will be closed between Wood Street and I-10 from 8 p.m. Friday, Sept. 15, to 4 a.m. Monday, Sept. 18.
- 40th Street will be closed in both directions between I-10 and Broadway Road from 10 p.m. Friday, Sept. 22, to 4 a.m. Monday, Sept. 25. At the same time, the eastbound I-10 on-ramp at 40th Street will be closed. Use the eastbound I-10 on-ramp at Broadway Road instead.

Click [here](#) to view the Behind the Scenes video about the long-term ramp closures.

October freeway closures

Check your travel plans. The I-10 Broadway Curve Improvement Project is scheduled to have lane restrictions and freeway closures every weekend Sept. 29, through Oct. 30. To #StayAheadOfTheCurve, visit the project [website](#) or download the free mobile app, [The Curve](#), before you travel.

Your questions answered

I would love to see a rendering of the interchange at US 60/I-10.

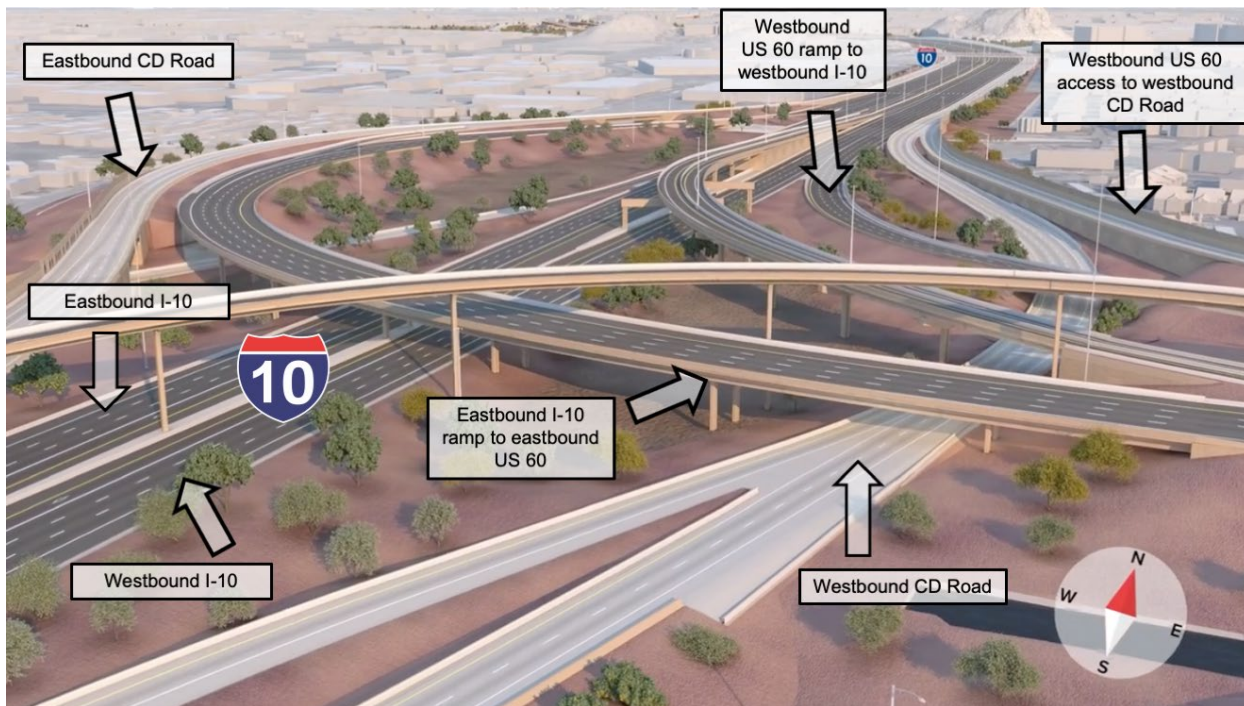
While the ramps between US 60 and I-10 will remain nearly the same, the addition of the Collector-Distributor (CD) road is a significant improvement. You can see that the CD roads are being constructed along westbound I-10 beginning at Baseline Road. When complete, there will be three westbound CD road lanes from Baseline Road to 40th Street and two eastbound CD road lanes from 48th Street to Baseline Road. As the name suggests, these roads will collect traffic from the I-10 mainline, State Route 143 and US 60 and distribute it to crossroads or other highways. CD roads are similar to frontage roads, but without driveways or cross-street intersections. Once open, the CD roads will separate through-traffic on I-10 from local traffic entering and exiting the highway.

The visual animation, located at <https://i10broadwaycurve.com/videos/>, provides a rendering of the entire project, including multiple angles of what the new I-10 interchange with US 60 will look like. You can find answers to other frequently asked questions at <https://i10broadwaycurve.com/faq/>.

Current Status



Final Configuration



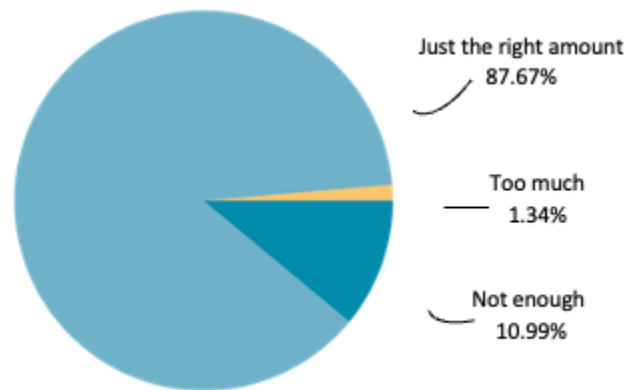
Construction operations survey results

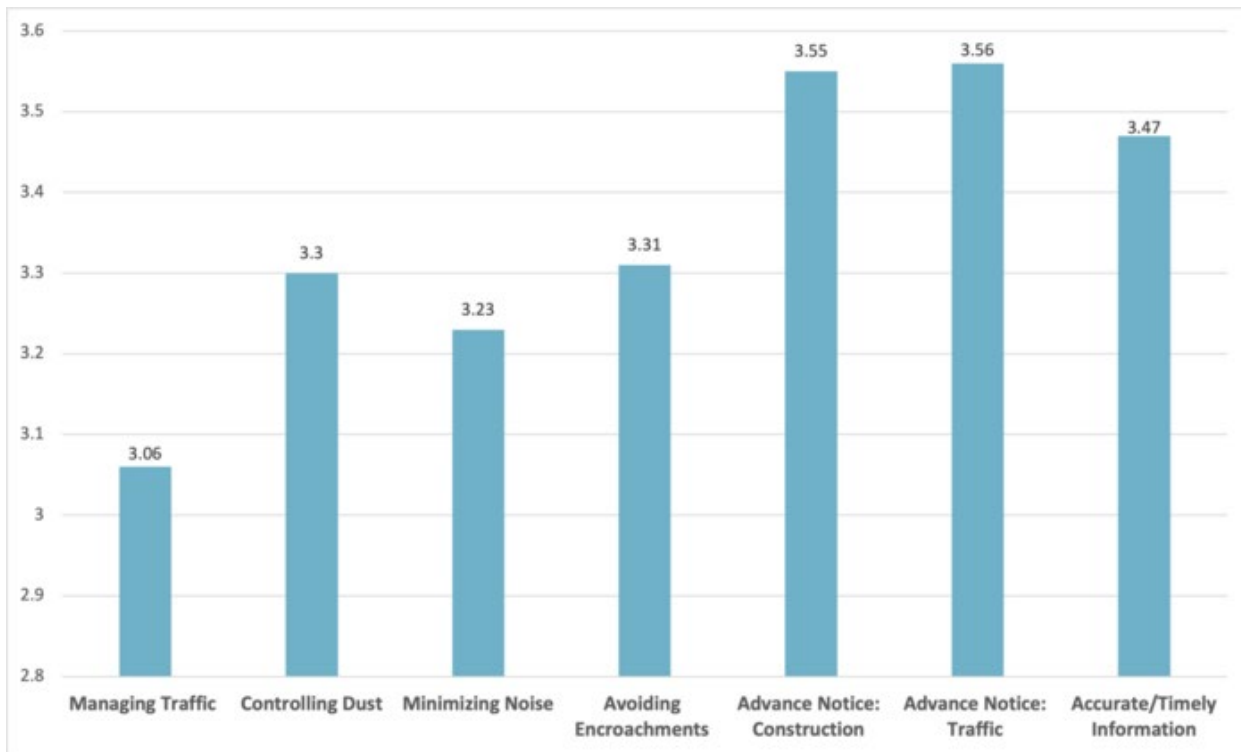
Thank you to everyone who completed our Construction Operations Survey in July. A total of 395 individuals responded to the survey; this is the highest response rate we have had. Respondents provided feedback on construction activities between Jan. 1 and June 30, 2023.

Respondents rated construction activities on a scale of 1 (poor) to 4 (excellent). The highest rated activities included advance notice of traffic restrictions and closures (3.6), advance notice of construction activities (3.6), and providing accurate/timely information that is reliable (3.5). The lowest rating received was for managing traffic through the construction zone (3.1).

87.67% of respondents reported that they had received just the right amount of information. Respondents reported the top three methods by which they have received information are Emailed Construction Notice Flyers (57.64%), Email Alerts (50.67%) and Monthly E-newsletters (41.55%). Respondents reported they prefer to receive project information primarily via email and freeway and street signs.

The next Construction Operations Survey will open in January 2024.





#StayAheadOfTheCurve

Construction is scheduled to continue through late 2024. Throughout this project, our goal is to minimize impacts as much as possible and provide timely, accurate information so you can plan ahead and get to where you need to be. Learn more about the project and engage with the project team in any of these ways:

- **Bilingual Project Information Line:** 602.501.5505
- **Project Website:** i10BroadwayCurve.com
- **Visit or Write:** 3157 E. Elwood St., Suite 100, Phoenix 85034. The Community Office is open from 8 a.m. to 5 p.m., Monday through Friday, except holidays.
- **Email:** Info@i10BroadwayCurve.com
- **App:** Join more than 13,000 others who want to stay ahead of the curve by downloading our free mobile app, The Curve. You'll find it on the [App Store](#) or [Google Play](#).