

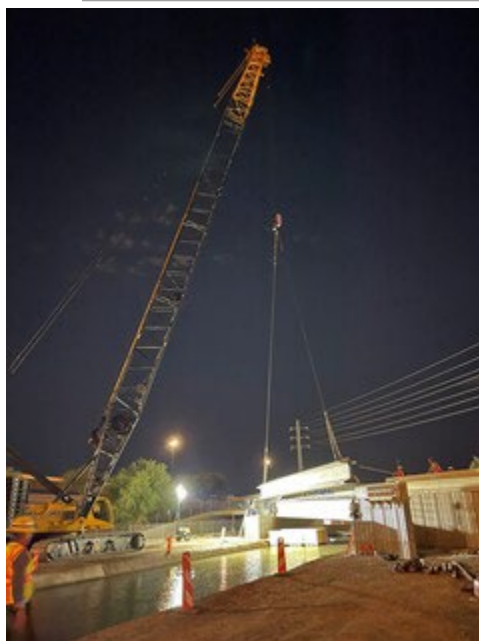


July 2023



Work Zone Safety is Everyone's Responsibility

Please remember that the maximum speed limit in the work zone is 55 mph. Click [here](#) to view the new public service announcement that features Interstate 10 Broadway Curve Improvement Project workers reminding drivers that driving 55 save lives. For more information about keeping the work zone, click [here](#).



Ready, Girds, Go! Girders Set

Earlier in July, crews set girders to widen the westbound I-10 ramp to eastbound US 60 and the eastbound US 60 bridge over Priest Drive.

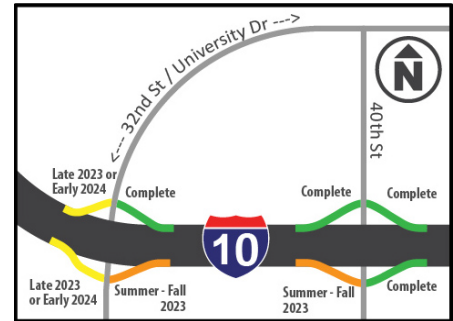
Later this month, crews plan to place girders for the bridge that will connect State Route 143 to the eastbound Collector-Distributor road.

To #StayAheadOfTheCurve, visit the project [website](#) or download the free mobile app, [The Curve](#), before you travel.

Long-Term I-10 Ramp Closure

The eastbound I-10 on-ramp at 32nd Street and the eastbound I-10 off-ramp at 40th Street will be closed in August and September to reconfigure the ramps.

Both long-term closures will last approximately seven weeks.



How are we doing?

Let us know by participating in our Construction Operations Survey for the I-10 Broadway Curve Improvement Project

Please take a couple of minutes to let us know how we did between Jan. 1 and June 30, 2023, by completing this [survey](#). Your responses will help us determine how we can improve construction activities and communication efforts moving forward.

We appreciate your response by 4 p.m. on Friday, July 21, 2023.

Take the [survey here](#).

This is an anonymous survey and your participation is completely voluntary.



Your questions answered

What is happening with the westbound I-10 ramp to northbound SR 143?

Crews reduced the number of lanes on the westbound I-10 ramp to northbound SR 143 to make room to build the new ramp. The project team anticipates any delays on the narrowed ramp will improve now that westbound I-10 off-ramp at 40th Street reopens in late July. In the coming weeks, the project team will reassess the traffic conditions to determine whether modifying the traffic control on the westbound I-10 ramp to northbound SR 143 is necessary.

You can find answers to other frequently asked questions [here](#).

#StayAheadOfTheCurve

Construction is scheduled to continue through late 2024. Throughout this project, our goal is to minimize impacts as much as possible and provide timely, accurate information so you can plan ahead and get to where you need to be. Learn more about the project and engage with the project team in any of these ways:

- **Bilingual Project Information Line:** 602.501.5505
- **Project Website:** i10BroadwayCurve.com
- **Visit or Write:** 3157 E. Elwood St., Suite 100, Phoenix 85034. The Community Office is open from 8 a.m. to 5 p.m., Monday through Friday, except holidays.
- **Email:** Info@i10BroadwayCurve.com
- **App:** Join more than 13,000 others who want to stay ahead of the curve by downloading our free mobile app, The Curve. You'll find it on the [App Store](#) or [Google Play](#).