

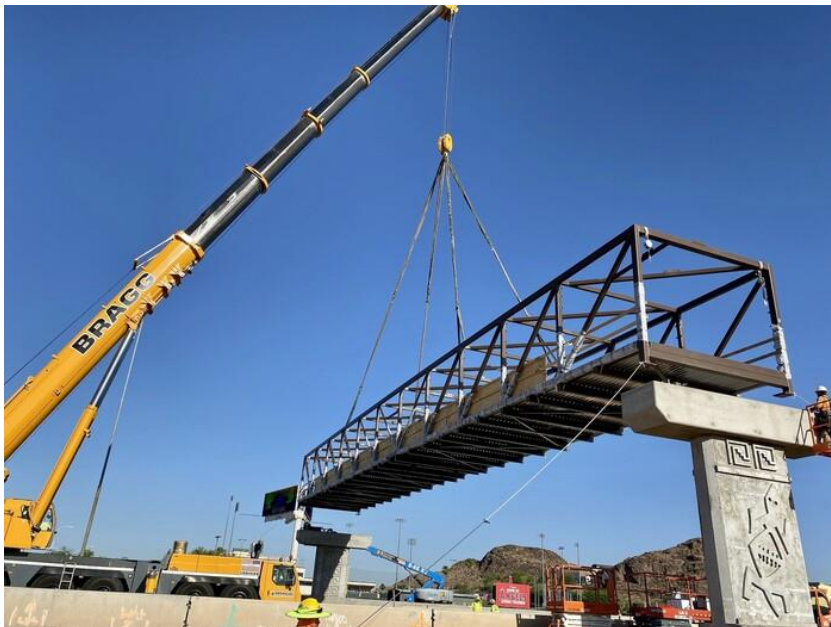


June 2023

## Multiuse Bridges Taking Shape

On June 3, workers placed a section of the bridge truss for the multiuse bridge at Alameda Drive over westbound I-10 and began constructing the bridge deck. They plan to set a second section of truss over eastbound I-10 and begin building that bridge deck during the second half of June.

In the fall, workers plan to place the bridge truss for the multiuse bridge at the Western Canal over I-10. The multiuse bridges are included in this project because they align with the project goals of increasing connectivity for bicyclists and pedestrians, and reducing pressure on local roads.





## New Westbound US 60 to Westbound Interstate 10 Ramp Opens

Crews opened the new ramp from westbound US 60 to westbound I-10 on June 5 and began removing the old ramp next to it. When complete, the westbound Collector-Distributor (CD) road will pass under the new ramp and over the new bridge at Southern Avenue. The CD roads will run parallel to I-10 from

Baseline Road to 40th Street and will separate through-traffic on I-10 from local traffic entering and exiting the highway.

---

## Long-Term Ramp Closures at 32nd and 40th Street Continue

Ramp reconfigurations at 32nd and 40th streets will continue to require long-term ramp closures through the summer. On June 3, workers closed the westbound I-10 off-ramp at 40th Street. They expect to keep the ramp closed into July. Drivers can use the newly constructed westbound I-10 off-ramp at 32nd Street instead.



Later this summer, crews plan to close the eastbound I-10 on-ramp at 32nd Street and the eastbound I-10 off-ramp at 40th Street. Workers expect those closures to last approximately six weeks each.

To complete the ramp reconfigurations, northbound 32nd Street is scheduled to close between Wood Street and I-10 and southbound 40th Street is scheduled to close between I-10 and Broadway most weekends in August and September. Get the latest information about these closures and #StayAheadOfTheCurve by visiting the project [website](#) or downloading the free mobile app, [The Curve](#), before you travel.

---



## Your Questions Answered

### Why does the project move the lane lines on the road?

The Broadway Curve Constructors agreed to maintain the same number of lanes on I-10 throughout construction. To accomplish this, and maintain safe work zones, crews shift lanes a few feet by creating new lane lines. For instance, work began in the median near 32nd Street in 2021. Then, in early 2022, crews completed that work and needed to begin working in the shoulder. To shift the work zone and travel lanes, they removed the existing lane lines and placed new lane lines closer to the median. In other areas of the project, crews began working on the shoulder and then moved into the median. In these cases, they

removed the existing lane lines and placed new lane lines closer to the shoulder.

In these temporary configurations, raised pavement markers are being used to help motorists see the lane lines. The position of the sun can impact general visibility on any roadway. The impact will vary depending on the time of the year and location of sunrise and sunset. The final lane configuration will include black contrast lines to help the markings stand out on concrete pavement.

As with any construction zone, motorists should be alert, observe the 55 mph speed limit and drive with caution. The project team regularly monitors the condition of the temporary lane striping.

---

## #StayAheadOfTheCurve

Construction is scheduled to continue through late 2024. Throughout this project, our goal is to minimize impacts as much as possible and provide timely, accurate information so you can plan ahead and get to where you need to be. Learn more about the project and engage with the project team in any of these ways:

- **Bilingual Project Information Line:** 602.501.5505
- **Project Website:** [i10BroadwayCurve.com](http://i10BroadwayCurve.com)
- **Visit or Write:** 3157 E. Elwood St., Suite 100, Phoenix 85034. The Community Office is open from 8 a.m. to 5 p.m., Monday through Friday, except holidays.
- **Email:** [Info@i10BroadwayCurve.com](mailto:Info@i10BroadwayCurve.com)
- **App:** Join more than 11,000 others who want to stay ahead of the curve by downloading our free mobile app, The Curve. You'll find it on the [App Store](#) or [Google Play](#).