



## December 2021

Happy Holidays from the Interstate 10 Broadway Curve Improvement Project Team!

As we round out 2021, construction activities are now underway in each of the project's three segments: the West Segment between 24th and 40th streets; the Central Segment between 40th Street and approximately Southern Avenue, including State Route 143; and the East Segment between approximately Southern Avenue and Ray Road, including US 60 (Superstition Freeway). *See a map of the three segments below.*

In the West Segment, crews continue raising the median barrier wall and will begin installing new light poles in the median.

In the Central Segment, crews moved in cranes and drilling equipment to install the drilled-shaft foundations that will support the columns and abutments for the new 48th Street bridges over I-10. Workers are also fabricating the rebar cages for the drilled-shaft foundations. Once the shafts are drilled, the fabricated rebar cages are lifted with a crane and lowered into the drilled shafts, which are then filled with concrete. For the new 48th Street bridges, there will be 10 drilled-shaft foundations: five per bridge, with each one approximately 50 to 60 feet deep.

With several bridges being constructed for this project, the depth of the drilled shafts will vary and, in some cases, will be as deep as 120 feet! The diameter and depth are different from bridge to bridge based on several factors, such as the soil type and the amount of weight the bridge must support.

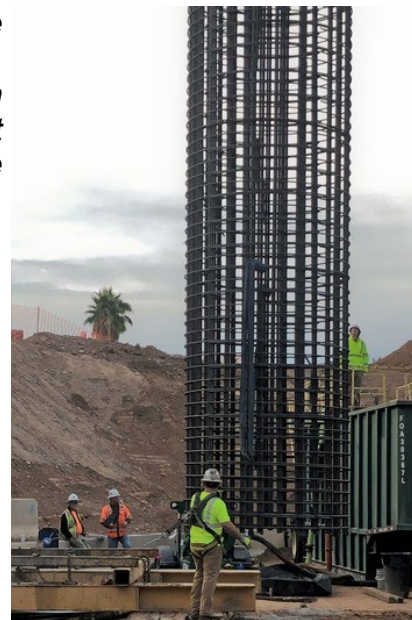
In the East Segment, crews moved in cranes and equipment to begin drilling the foundations that will support the columns and abutments for the widened

Guadalupe Road bridge over I-10. When completed, the wider bridge will improve the Sun Circle Trail Crossing for pedestrians, bicyclists and equestrians.

During the holiday season, project-related lane and ramp closures are limited to emergency repair work only. Beginning in January 2022, expect more overnight and weekend restrictions and full highway closures as major construction activities get underway.

**December 21, 2021:** Workers lower a rebar cage into a 50-foot drilled shaft at 48th Street and I-10.

Once the cage is in place, the shaft is filled with concrete. This was the very first drilled-shaft foundation completed for the I-10 Broadway Curve Improvement Project. It will help support the new, northbound 48th Street bridge over I-10.



**Pictured below:** The project has three segments: West, Central and East. Construction is, and will, occur simultaneously in all three of them.



Throughout this three-year project, our goal is to minimize construction impacts as much as possible and provide timely and accurate information so you can plan ahead. Learn more about the project and engage with the project team as follows:

- **Bilingual Project Information Line:** 602.501.5505
- **Project Website:** [i10broadwaycurve.com](http://i10broadwaycurve.com)
- **Visit or Write:** 3157 E. Elwood St., Suite 100, Phoenix 85034. The Community Office is open during regular business hours, 8 a.m. to 5 p.m., Mondays – Fridays (except holidays).
- **Email:** [Info@i10BroadwayCurve.com](mailto:Info@i10BroadwayCurve.com)

We appreciate your patience during construction! #StayAheadofTheCurve and download our free mobile app, The Curve, on the [App Store](#) or [Google Play](#).



Arizona Department  
of Transportation

ADOT Project No. 010 MA 149  
F007201C  
Federal Aid No. 010-C(220)T